



CHILDREN ... THE HEART OF THE MATTER

© 1988 NeAEYC

Nebraska Association for the Education of Young Children, Inc.

An affiliate of the National Association for the Education of Young Children

JANUARY 2011 NEWSLETTER

FROM THE PRESIDENT Dawn Mollenkopf



Recently I found myself shoveling my driveway and sidewalks to create a path through the season's first "real" snowstorm to allow others to walk by my house. Although the weather channel had posted a description of 1-2 inches, clearly 4 inches or more had chosen to settle in my neighborhood. Fortunately, the snow

was a dry, light snow and although the temperature was cold, the wind was not blowing and the sun was shining. An hour later, my task was done and I nodded briefly to the grateful letter carrier who was able to drop off my mail without treading through the snow.

Although I love the panorama of new fallen snow on the lawns and trees, I realize that snow can be both a blessing and a barrier. It is a blessing because it covers up the brown, muddy ground and barren earth characteristic of this time of year. It makes everything new. It can be a barrier, however, when it impedes traffic and makes it difficult for us to get to our intended destinations. By shoveling the walks and driveway I was able to achieve a balance of both—a lawn and trees wrapped gently in a blanket of snow with clearly visible paths to navigate new places.

As teachers, administrators, staff, social service workers, medical personnel, and parents we are often surrounded by things that serve to be both blessings and barriers. Legislation for families and children serves some families but not others. College and other educational opportunities for professional development are not equally available for teachers and staff. Childcare program options vary in availability, affordability, and quality. As we enter 2011, may we all appreciate the achievements we have gained so far in our field and continue to work together to create paths to help children, families, and those who work with them navigate new places and reach their intended destinations.

CHANGES IN THE NEWSLETTER SCHEDULE AND FORMAT

Beginning with this issue, the NeAEYC newsletter will be distributed 6 times a year. We have realized that some of the information we are distributing has become old and stale when we wait a quarter, and feel this will be more timely and better meet the needs of the early childhood community.

- ♥ New in this issue is the beginning of a series of articles about possible insurance needs of child care facilities.
- ♥ There are also photos and an article about the Metropolitan Community College student group.
- ♥ We'll be capping the length of the newsletter at about 12 pages. It is easy to keep adding pages, but we hope to zero in on information that is truly valuable for you.
- ♥ We welcome articles and information from members of the early childhood community.

Please submit any articles or information by the 1st of the month of publication/distribution.

We plan to distribute the newsletters "somewhere around" the 15th of the following months:
January, March, May, July, September, & November.

**week of the
young child** 

The 2011 Week of the Young Child will be held April 10-16 and the theme for 2011 is
Early Year Are Learning Years.

"Even if you're on the right track, you'll get run over if you just sit there."

Will Rogers

Nebraska Association for the Education of Young Children Mission Statement

The Nebraska Association for the Education of Young Children, Inc. is committed to supporting high quality care and education for young children in the state of Nebraska.

The mission of the Nebraska Association for the Education of Young Children, Inc. is to:

- ♥ promote professional development activities
- ♥ advocate for issues relating to children and families
- ♥ serve as a resource for local affiliates and for other agencies involved in working with and for children and families
- ♥ disseminate information supportive of quality services, education, and care for children and their families
- ♥ provide networking opportunities for early childhood professionals and families throughout the state.

IN THIS ISSUE:

Page 1 - Letter from President, Changes in Schedule, WOYC

Page 2 - Board & Staff list, Mission Statement

Page 3 - NAEYC Updates, Featured Web Page

Page 4 - Advocacy, New State Senators

Page 5 - NeAEYC Activities, Mind in the Making Book

Page 6 - NeAEYC Activities, Homeless Recognition

Page 7 - Accreditation Retreat, Stipends

Page 8 - Outdoor Classroom, Gomez

Page 9 - Infant-Toddler Initiative, Child Care Insurance Information

Page 10 - Affiliate & Chapter Information: Kearney & Columbus

Page 11 - Affiliate & Chapter information: LAEYC & OAEYC

Page 12 - Student Activities: Southeast & Metro

Page 13 - Email Protocol Article & Conference List

Nebraska AEYC Office Staff

Gina DeFreece, Special Projects Coordinator
(402) 476-5672 - gdefreece@NebraskaAEYC.org

Connie Fishburn, T.E.A.C.H. Assistant
(402) 476-5663 - cfishburn@NebraskaAEYC.org

Tracy Gordon, Special Projects Coordinator
(402) 476-5662 - TGordon@NebraskaAEYC.org

Jennifer Harris, Accountant
(402) 476-5671 - jharris@NebraskaAEYC.org

Pat Hoffschneider, Office Manager
(402) 476-2092 - phoff@NebraskaAEYC.org

Cindy Jennett, Special Projects Coordinator
(402) 476-5653 - cjennett@NebraskaAEYC.org

Brandee Lengel, T.E.A.C.H. Manager
(402) 476-5658 - TEACH@NebraskaAEYC.org

1-877-656-2005

BOARD OF DIRECTORS January 1, 2011 – December 31, 2011 Executive Committee

President

Dawn Mollenkopf, PhD., Kearney
University of Nebraska at Kearney Professor

Secretary

Pat Enevoldsen, Lincoln
Southeast Community College Professor

Finance Chair

Linda Sullivan, Lincoln
Family Service Association of Lincoln Finance Director

Members

Gina Battey, Omaha, child care provider

Karen Decker, Kearney, Sugar & Spice Center Director

Jennifer Haggart, Omaha
Early Childhood Consortium of the Omaha Area

Kim Madsen, ED, Chadron,
Chadron State College Professor

Amber McCants, Lincoln, Family Child Care Provider

Linda Maslowski, Lincoln, Independent Consultant

Deb Ross, Hastings,
Child & Family Development Program Director

Sue Ellen Wall, JD, Lincoln, Wall Law Office Attorney

Kathy Zadina, Columbus,
St. Bonaventure Center Director

José Zapata, Loup City,
Central Nebraska Community Services Executive Director

Ex-Officio

Public Policy Chair

Sarah Ann Kotchian, JD, Omaha, Building Bright
Futures Early Childhood Coordinator

Nebraska AEYC

Linda Zinke, Executive Director

650 J Street, Suite 23

Lincoln, NE 68508

Ph: 402-476-2089

Fax: 402-476-5665

Email – Lzinke@NebraskaAEYC.org

www.NebraskaAEYC.org

*Strengthening and supporting Nebraska's
early childhood community since 1976*

NAEYC UPDATES



NAEYC Annual Conference

NAEYC Annual
Conference
& Expo
November 3-6, 2010



Three members of the Nebraska AEYC staff, Cindy Jennett, Tracy Gordon, and Gina DeFreece and the Board President, Dawn Mollenkopf, attended the NAEYC Annual Conference & Expo in Anaheim, CA.

Cindy Jennett commented: "The vendor display was diverse and helpful. Great examples of products, materials, and resources were offered. The training's were inclusive of a variety of interests. I

gained information to support my professional growth through leadership skills, new learnings and curriculum information to support the providers I work in partnership with."

PUBLIC POLICY FORUM—Washington DC



Nebraska representatives are planning to attend the NAEYC Quality Ratings System Meeting & Public Policy Forum, scheduled for March 28-30, 2011.

The public policy forum is a yearly event for NAEYC members to hear from national experts and federal officials, participate in breakout sessions on key state policy topics, and spend a day visiting your members of Congress. Participants will attend Tuesday sessions to be fully prepared on the key messages for the meetings with Congressional offices. NAEYC will schedule the visits.



WEBSITE UPDATES

FEATURED WEBPAGE

www.NebraskaAEYC/ADVOCACY

Links to:

Federal Office Holders
State Senators Roster
Nebraska's Unicameral
Children's Defense Fund
NAEYC Children's Champions
National Head Start Association
Voices for Children in Nebraska

Advancing Early Childhood Policy (Article Provided by
Nebraska Children & Families Foundation)

Laws regarding advocacy & education for nonprofits
Birth to Five Alliance
Getting a Leg Up on Childhood (Good Morning America)
Say Yes Now—Advocacy Video
James Heckman Video

The Nebraska AEYC web site continues to get about 1500 hits per month.



T.E.A.C.H. Early Childhood® NEBRASKA continues to be the most popular page to view.

Other top pages are the Calendar, Job Postings, Newsletter, Professional Development, Affiliates/Chapters/Students, and Nature Explore™ Project.

www.NebraskaAEYC.org

"The trouble with facts is that there are so many of them."

Samuel McChord Crothers

ADVOCACY

New Year, New Challenges, New Hope!

The New Year brings with it a new Nebraska Unicameral, a new Congress, and a new climate to support and inspire positive change among policy makers in the field of early childhood. At both the state and federal levels, it is going to be all about the budget. This means an opportunity like none other is in front of us to educate our elected officials and others about the importance of investing in the first five years. It will be critical that we take time this year to continue to make calls, write letters, and schedule visits like we never have before to protect the funding that we have and to help guide investments in sound economic policies around the first five years.



*Sarah Ann Kotchian
Public Policy Chair*

The reality - Before Congress adjourned in 2010, the Senate failed to pass an Omnibus bill that would have prevented deep cuts to early childhood. There simply were not enough bipartisan votes for it to pass. The Omnibus held great promise for early learning, not only preserving services for hundreds of thousands of at-risk children in Head Start, Early Head Start, and child care whose early learning experiences are now in great peril, but also launching the much needed Early Learning Challenge Fund. The tough decisions about spending and some real implications for early childhood federal funding for Nebraska will fall to the 112th Congress, potentially leaving us with a much tougher fight against even deeper cuts. Along with a looming decrease in federal funding, we know we will be working at the Unicameral to prevent cuts to the already too low Title XX reimbursement rates and to protect funding for the Early Childhood Grants.

But never fear! The new political landscape is an opportunity to communicate and teach those who don't know it yet that we have a solution for tough economic times, and that better outcomes will come from it. The best thing we can do now is to create a strong, unified field with a consistent message when it comes to early learning funding and policy. We will work to keep you updated as we hear developments, provide you with advocacy training, and be available to answer questions and tell you what you can do in a timely fashion to advocate for early childhood education. So keep the hope with us and know that we are grateful for all of your work to help create a strong early childhood lobby from within. Each and every call and every single letter and email will add up to truly and significantly change the trajectory of children's lives and our future. How can we not be full of hope in that knowledge? Happy New Year to all of you and here's to the good things to come!

Welcome to the New State Senators & Board of Education members!!

Nebraska State Senate Seats:

Incumbents were elected in nearly all of the races for the Nebraska State Senate seats.

In three districts, districts 8, 14, & 22, the incumbent either chose not to run or was ineligible to do so. Senators elected in these districts were:

- ♥ District 8: **Burke Harr, Omaha** - this race was very close and was recently decided
- ♥ District 14: **Jim Smith, Papillion**
- ♥ District 22: **Paul Schumacher, Columbus**

In District 10, **Bob Krist, Omaha** - appointed to replace Senator Mike Friend in September, 2009, ran against Tim Lonergan. In a closely contested race, Senator Krist retained this seat.

In District 16, **Lydia Brasch, Bancroft** unseated Incumbent Kent Rogert of Tekamah, and in District 40, **Tyler Larsen of O'Neill** unseated Merton "Cap" Dierks of Ewing.

Nine of the 24 districts up for reelection had no challenger for the senate seat.

Elected to the State Board of Education were:

- District 5: Patricia H. Timm, Beatrice
- District 6: Lynn R. Cronk, Grand Island
- District 7: Molly O'Holleran, North Platte
- District 8: John Sieler, Omaha

***NEBRASKA AEYC CONGRATULATES THE ELECTION WINNERS,
AND COMMENDS THEM FOR THEIR DESIRE TO SERVE.***

"Leadership has a harder job to do than just choose sides. It must bring the sides together."

Jesse Jackson

NeAEYC ACTIVITIES

World Forum on Nature—October 17-20, 2010

This article is from the World Forum website: www.worldforumfoundation.org

The Arbor Day Foundation invited the Nature Action Collaborative for Children once again to its magnificent conference center in the midst of great natural beauty.

Over 250 delegates from a wide range of professionals from six continents gathered to share ideas on how we can reconnect children around the world with nature.

Purpose: Planet Earth is vulnerable to environmental threats of monumental proportions. Our current generation of leaders is only beginning to address these challenges. Globally we require dramatic progress in developing renewable energy sources, curbing encroachments on the natural environment, and fostering sustainable development.

Finding solutions to environmental challenges will require the best minds and best efforts of this and future generations. It is vital that we help today's young children on behalf of the environment as adults.

Organizers: This project was led by the Nature Action Collaborative for Children of the World Forum Foundation. The Forum was hosted by the Arbor Day Foundation, and the Nature Action Kits were developed by Dimensions Educational Research Foundation. To learn more about these organizers, go to www.dimensionsfoundation.org and www.arborday.org. Funding for this Forum was provided by a growing number of sponsors including IBM Work/Life fund.



NeNAC Project



Forum participants were selected based on their applications. The applications were in the following categories:

- ♥ Developing or Revising Nature-Related Public Policies (7 teams)
- ♥ Putting on a Community Forum (7 teams)
- ♥ Organizing a Conference (7 teams)
- ♥ Creating Multi-Disciplinary Nature-Related College Courses (12 teams)
- ♥ Family Nature Activities/Family Nature Clubs (12 teams)
- ♥ Designing Outdoor Nature-Based Spaces (26 teams)

Nebraska team members Marcia Corr, Ken Finch, Pat Geary, Mary Ann Wells, Carol Fichter, & Linda Zinke.

Several members of the Nebraska Nature Action Collaboration for Children participated in the World Forum on Nature. Nebraska members participated in :

Putting on A Community Forum, Creating Multi-Disciplinary Nature-Related College Courses, and Family Nature Activities/Family Nature Clubs. The Nebraska team pictured participated in **Putting on a Community Forum**. More information on this project will follow in future newsletters.

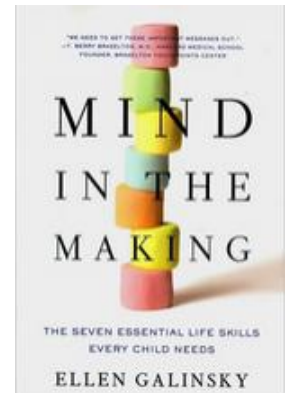


The Seven Essential Skills Every Child Needs

Ellen Galinsky has captured relevant early childhood research and spelled out for parents and teachers the practical applications for raising well-rounded children who will reach their full potential in **Mind in the Making: The Seven Essential Life Skills Every Child Needs**. She groups this research into seven "essential life skills":

- Focus and self control
- Perspective taking
- Communicating
- Making connections
- Critical thinking
- Taking on challenges
- Self-directed, engaged learning

From *ExchangeEveryDay* - a free online newsletter



NeAEYC ACTIVITIES

NeAEYC Recognition at the Homeless Recognition Event

The **Nebraska Association for the Education of Young Children**, Inc. was recognized as the Service/Club/Volunteer Group of the year at the 11th Annual Hunger & Homeless Recognition Event in Lincoln at the Matt Talbot Center on November 19, 2010. NeAEYC was recognized for their support of the annual homeless event. This event, held in October, provided a wide array of services for over 200 homeless people. NeAEYC has been providing child care services, as well as books and diapers for families that attended this event. Gina DeFreece, Special Projects Coordinator & Linda Zinke, Executive Director, attended the recognition event.

Scott Young, M.C. presenting the award to Gina DeFreece & Linda Zinke



2010 Award Recipients

- Media: B.J. Nannen, KLKN TV Channel 8
- Volunteer: Ruth McKinstry, Matt Talbot Kitchen & Outreach
- Service Club/Volunteer Group: Nebraska Association for the Education of Young Children
- Foundation/Funder: Cooper Foundation
- Business: Lincoln Electric System
- Human Service Individual: Sara Sunderman, Matt Talbot Kitchen & Outreach
- Human Service Team: Maddy Madsen & Betty Sweeney, Lincoln Housing Authority
- Project Homeless Connect: Denise Packard & Lee Heflebower

2010 Certificates of Recognition

- | | |
|-------------------------------|-------------------------------|
| Mandy Bell Eigsti | HPRP Case Managers |
| Sister Cecella | Brester Construction |
| Janette Johnson | Sinclair Hille Architects |
| Rachel Droogsma and NWU Class | Cathy Brown |
| | Lincoln Evening Optimist Club |



To Donate

Visit the website/[To Donate](#), and you can donate to NeAEYC or any of the projects. You can also donate to support student groups. You can donate with a credit card - we'll send you a letter for your taxes.

NeAEYC is on Facebook

If you are a Facebook Member just type: facebook.com/NeAEYC in your browser and it will lead you directly to our page. Click the "LIKE" button at the top of the page.



Welcome To The New Members For The Fourth Quarter of 2010

- | | |
|--------------------|------------------|
| Kylie Andrews | Amanda Kracl |
| Jenny Bradley | Corine Lambright |
| Nicole Brewer | Dalhia Lloyd |
| Kara Dahle | Sara Lown |
| Catherine Dredla | Melissa Pewthers |
| Stephanie Dovark | Penny Robbins |
| Veronica Free | Carrie Roberts |
| Erin Hamel | Mercedes Sanchez |
| Jessica Jarecki | Angie Sherburne |
| Gail Jefferson | Nicole Sprague |
| Julie Jones-Branch | Dalene Ward |
| Sharon Kimmons | Katharine Young |
| Lindsey Kortum | Michelle Zimmer |



"Influence comes out of the work that you've done and the things you've stood for. Influence and power shouldn't be given to just anybody who wants them."

Millicent Fenwick

ACCREDITATION

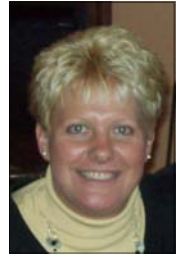
Accreditation Retreat

The receipt of the funds from the American Recovery and Reinvestment Act has allowed us to again provide support to currently accredited programs, and those considering/working on accreditation.

An accreditation retreat was held at the University of Nebraska at Kearney on October 28, 2010

Topics of the day:

- ♥ 4 steps in the accreditation process,
- ♥ Creation of Program and Classroom Portfolios,
- ♥ Sharing of successes and problems, and
- ♥ Networking with others.



Tracy Gordon,
Special Projects
Coordinator

Evaluation results:

100% of the feedback from the evaluation form ranked all items either Excellent or Very Good.

Comments included:

Best part of the day was: "Time to work with others in NeAEYC", "Going through the criteria piece by piece and getting ideas", "Great dialogue", "Understanding the process better as a whole", "Great ideas and networking resources!".

Concerns/questions about the NAEYC accreditation process: "Time consuming", "Keeping updated on changes"

What things would help you in the future: "Teacher groups to digest criteria for classroom portfolios", "More of these sessions as we work through the steps", "More visual examples brought by participants", "Continuation of criteria explanations".

Thanks to Dawn Mollenkopf and Karen Decker for their help and support with the logistics for the retreat!!!!

Accreditation Center Stipends

Funds from the American Recovery and Reinvestment Act were also provided to support those accredited centers who are receiving Health & Human Services System subsidy support for the children/families they current have enrolled.

In November, a survey was distributed to all currently accredited centers to gather demographic information, as well as information about the number of children currently served on subsidy. Several centers returned their survey and funds were distributed in early December. These funds are to provide assistance to the centers to maintain their level of quality.



\$10,500 was distributed to 11 centers located in Lincoln, Omaha, Falls City, Seward, and Chardon. A second stipend distribution will occur in the spring.

NEBRASKA AEYC ACCREDITATION SUPPORT

TRACY GORDON is available to provide training, coaching and support to programs working on their accreditation process. She has been working with programs in both Omaha and Lincoln. She can provide a one-time training event, or ongoing support, scheduled together with the program.

For more information, contact Tracy at tgordon@NebraskaAEYC.org or 402-476-5662.

NEBRASKA DEPARTMENT OF EDUCATION SUPPORT

Nebraska Department of Education provides support for accreditation through funds for partial payment of self-study, application, candidate and annual report fees.

Contact: Linda Meyers – 402-471-2980 or linda.meyers@nebraska.gov

OUTDOOR CLASSROOMS SPOTLIGHT



Where every child's dreams...are never out of reach.

Gomez Heritage Elementary School

5101 South 17th Street,
Omaha, NE 68107

Phone: 402-898-2801

Principal: Mary Morrissey

**Certified
Nature
Explore
Classroom**

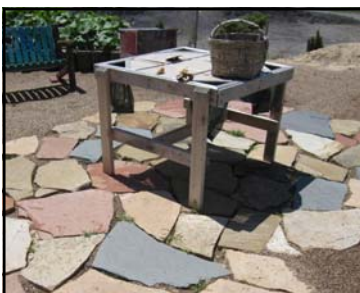


This school opened in 2004. The word Heritage was included to honor all ethnic groups who have settled and thrived in this neighborhood since the late 1800's.

It serves 500 students from Prekindergarten through 4th grade.

The student population is 83.6% Hispanic, 4.5% African American, and 11% White.

81% of the students are considered economically disadvantaged.



"Winter is an etching, spring a watercolor, summer an oil painting and autumn a mosaic of them all."

Stanley Horowitz



QUALITY ENHANCEMENT INITIATIVE

Early Head Start Infant-Toddler Quality Initiative

2009-2010 SUMMARY

A total of 77 Lancaster County providers participated in the 09-10 Infant-Toddler Initiative.

- ♥ 11 providers participated in Option 1. **The average increase between the pre and post Environment Ratings Scale are 32.79%**. The greatest increase was in the area of Listening & Talking, a category which includes use of language and reading books. Three other categories, Activities, Interaction, and Program Structure also showed significant increases.
- ♥ 5 providers participated as Option 2 providers.
- ♥ 61 providers were Option 3 providers. 9 were Family Child Care Home providers, 15 were Home Visitors, and 37 were centers staff. Training opportunities included West Ed: Program for Infant/Toddler Caregivers, Early Head Start Infant/Toddler Initiative Overview, Safe With You, and CSEFEL Infant/Toddler Positive Behavior Support.



Cindy Jennett
Special Projects
Coordinator

Comments and feedback from the West Ed Training:

Very interactive; exciting and interesting information; information geared to providers and centers; great documentation for me to refer to later, great balance of discussions and movies with minimal lecture.

Comments and feedback from the CSEFEL Training:

Best features: Group discussions, leader's knowledge; it really opened my eyes to different behaviors and helped me understand the kids I work with every day; learning how to deal with problem children; I learned so much; I like the examples—figuring things out.

Child Care Insurance Options

As a new feature, we will be providing information describing various insurance products that may be important for your child care business. These articles are intended to be informational and educational, to help you make the best decisions for your business. They are not an endorsement for the products or the agent.

Not all Child Care Insurance Policies are Alike—Make Sure You Don't Have Gaps in Coverages

Top considerations for insurance coverage of your Child Care:

- ♥ Building and contents with special causes of loss coverage
- ♥ Loss of Business Income in the event of a loss to your facility from a covered peril
- ♥ Professional Liability and Abuse and Molestation coverage included in the premises general liability
- ♥ Auto Coverage to include for buses and 15 passenger vans as well as private passenger vehicles Also Hired and Non Owned Auto for employees running errands for the business in their own autos.
- ♥ Excess Umbrella Liability in the event of a large catastrophic loss
- ♥ For the children attending your childcare, Accident Medical coverage
- ♥ For protection of the board members and employees making the decisions for the facility, consider Directors and Officers Liability to include Employment Practices Liability for employee discrimination lawsuits.
- ♥ Theft of money or employee dishonesty can be a concern - do you carry Crime Coverage.



These areas of coverage will be explained and discussed in more detail in upcoming newsletters.

Watch for future articles on Child Care Insurance provided from Becky Haufler at INSPRO Insurance, Lincoln, NE; a commercial lines agent with over 30 years experience with Child Care providers.

"Parents need all the help they can get. The strongest as well as the most fragile family requires a vital network of social supports."

-Bernice Weissbourd

AFFILIATE AND CHAPTER INFORMATION

Kearney Chapter of Nebraska AEYC



Kearney Area Association for the Education of Young Children
SALUTES



Karen Decker,
Kearney
Chapter

Our Preschool Teachers
It would be an honor to have you join us
Monday, January 17, 2011 - 7 to 8 pm
French Café - 2202 Central Ave - Kearney, NE
Dessert, Coffee, Tea Bar and Fellowship Networking
You deserve a break.....
Please RSVP to Sue Klein at (308) 237-9622

All events are free for NAEYC members. The Chapter will pay 1/2 of the fee for any new membership.

A "Scavenger Hunt" is scheduled for **Monday, February 28, beginning at 6:30 p.m.**, as a networking/membership drive focusing on the college crowd. We will meet at the UNK Child Development Center to begin. The hunt will include searching for clues while visiting several Child Care Facilities in Kearney. Pane Bello will be the final stop for a treat.

"Gotta Love those Toddlers" will be the topic presented by Marcia Fritz and Mindy Young on **Monday, March 28, 2011** in the Cedar Room at the UNK Student Union.

Columbus Chapter of Nebraska AEYC

The Columbus Chapter sponsored a Preschool Networking Meeting in November on Movement Activities. **Additional Networking Meetings are planned for February and March.**

WEEK OF THE YOUNG CHILD PLANNED ACTIVITY

For Week of the Young Child, April 10-17, the Chapter is planning on coordinating a **community wide children's art display**. Programs will be paired with businesses to display. An article on the project and the importance of quality creative activities – which are both hands-on and open-ended – will be submitted to the local newspaper. An interview about the project will also be featured on a local radio station.



Kathy Zadina
Columbus Chapter

*"When we are dreaming along it is only a dream.
When we are dreaming with other, it is the beginning of reality".*

Dom Helder Camara

Lincoln Association for the Education of Young Children

SALLY WYSONG AWARD

The Lincoln Association for the Education of Young Children annually presents the Sally Wysong award to professionals who provide outstanding service to the children of Lincoln and their families. LAEYC is currently taking nominations for the 2011 award.

If you know someone that is an excellent child care provider, teacher, or advocate for children and families, please email: lincolnaeyc@yahoo.com

Submit the reason for the nomination and some information about the person being nominated (job, years in the field, achievements).

Past Sally Wysong recipients include Tracy Gordon, Marilyn Moore, Tom Fortune, Linda Zinke, Helen Raikes, Alicia Baillie, Pat Enevoldsen, and Carolyn Edwards.

We appreciate your input!
LAEYC Board



Crystal Kozak
SCC Chapter
Advisor

Omaha Association for the Education of Young Children

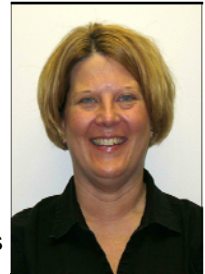
2011 Omaha AEYC Kaleidoscope Conference

A Day with the Lisa Murphy, Ooey Goey Lady

January 29, 8:30—3:30, Burke High School, Omaha, NE



Lisa Murphy has been involved with early childhood education for nearly 20 years. She is the founder and CEO of Ooey Goey, Inc. As the Ooey Goey Lady®, Lisa presents over 150 workshops each year. She has been featured in various publications including Child Care Business Exchange, Parents and Pre-K Today. Lisa has authored four books and has created dozens of teacher training DVD's. A highly sought-after keynoter for educational conferences, Lisa uses humor and real life anecdotes to reach and engage her audiences. Lisa's standing room only seminars have become nationally known for their information, humor, inspiration and energetic delivery. She dedicated to proving that playing is, in fact, "getting them ready" for school!



Jen Haggart
OAEYC President

Registrations must be received by Friday, January 14.

For more information, contact Sandy Peterson at spc08@cox.net or Jeanine Huntoon at huntoonfam@yahoo.com or visit www.NebraskaAEYC.org and click on the January calendar for a registration form and information.

Saturday, February 19, 2011

6:00 p.m. to 8:00 p.m.

Omaha Children's Museum

RSVP to OmahaAEYC@yahoo.com or 402-541-4718 by February 11, 2011

Mark your calendars and join Omaha AEYC for our first Networking Night of the New Year!



It's a night of retro fun with the Richman Gordman Zooland Animals in Omaha Children's Museum's "Big Back Yard" exhibit.

Attendees will have a chance to play in the Big Back Yard, enjoy food and drink and get to network with fellow colleagues.

There will be prizes for the best 60's, 70's or 80's costume. Omaha AEYC members who bring along a friend to introduce them to Omaha AEYC will receive a free gift. This event is open to all individuals who work in the early childhood field.



STUDENT ACTIVITIES

Metropolitan Community College Student Group

The Metropolitan Community College Early Childhood students hosted a Fall Creations event on Saturday, November 6. Food, craft materials, and door prizes were provided. The event was held to “make and take” a fun fall craft, hear more about the Early Childhood Education classes and the learn more about NAEYC.



Beth Brewer
MCC Student Chapter
Advisor



Interested in joining this group?
Contact Beth at
ebrewer@mccneb.edu



Southeast Community College Student Group

The Southeast Community College Student Group will be launching a **community service project** in January to benefit the Child Advocacy Center of Lincoln. Students have continued the Welcome Wagon at Early Childhood Education Program new student orientations as a way to have first contact with new students in the ECED Program and to introduce them to the Student Group.

January orientations featured Smartie candies (“Be a “Smartie” and get involved in the SCC Student Group!”) as well as hot cocoa/cider drinks (“Warm up to involvement in early childhood and the SCC Student Group!”).

Future projects include a presentation about national conference experiences to the Lincoln-Lancaster Regional Training Group, T-shirt sales and a student workshop.



Crystal Kozak,
LAEYC President

“If everybody is thinking alike, then someone isn’t thinking.”

George S. Patton

Send the Right Message



Before you hit “send,” wait a minute. If you haven’t evaluated your e-mail style lately, it may be time.

Like most professionals, you probably use e-mail for work on a regular basis. But over the years, you may have become a bit lax and adopted a casual style of e-mailing. Depending on your company culture, that may be no big deal for in-house e-mails. But when you’re e-mailing constituents or others outside of your organization, you want to send the right message.

Here are some common mistakes people make and how to avoid them.

1. **A vague subject line.** The subject line not only lets the recipient know what the message is about but also provides him or her with a reason to read it. Some get hundreds of e-mails each day. The subject line acts as the window into the message and can also indicate its urgency, so be specific with what you write there.
2. **No sign-off.** A signature at the end of your e-mail should include your e-mail address, physical work address and phone number. Including these details gives recipients multiple means of contacting you.
3. **Too casual.** “Im writing re: the meeting @3.” See the problems? What you write is a reflection of your professional self, so take the time to craft complete sentences, use proper grammar and check your spelling.
4. **SHOUTING.** Some people feel like they make a bigger impact with all capital letters. What they may not realize is this is the online equivalent of yelling, so avoid the temptation of using the caps lock button.
5. **Striking the wrong note.** Unfortunately, it’s easy for tone to be lost with the written word, especially in shorter messages. An attempt at humor, for instance, may be read as something offensive or inappropriate. If you’re not sure how something will be interpreted, leave it out.

From October 2010 - Firespring Market Sense Monthly Issue

“Good communication does not mean that you have to speak in perfectly formed sentences and paragraphs. It isn’t about slickness. Simple and clear go a long way.”

John Kotter

CONFERENCES AND UPCOMING EVENTS

- ♥ January 29, 2011: **Kaleidoscope Conference**, Omaha. Contact OmahaAEYC@yahoo.com
- ♥ February 5, 2011: **Early Childhood Conference**, Grand Island. Contact Sue.jensen@nebraska.gov
- ♥ February 5, 2011: **Early Childhood Conference**, Ainsworth. Contact Susan at sstrahm@esu1.org
- ♥ February 18, 2011: **United We Stand Conference**, Chadron. Contact Candis at cljones@esu13.org
- ♥ February 26, 2011: **Early Childhood Conference**, Holdrege. Contact lcrandall1@unl.edu
- ♥ March 29-30, 2011: **NAEYC Public Forum**, Washington, DC. For more info: www.NAEYC.org
- ♥ April 2, 2011: **Early Childhood Conference**, Peru. Contact Cara Small at csmall@esu6.org
- ♥ April 4-8, 2011: **National Head Start Association Conference**, Kansas City, MO.
- ♥ April 10-16, 2011: **Week of the Young Child**, Nation-wide. www.NebraskaAEYC.org/www.naeyc.org
- ♥ April 12-14, 2011: **ERS Training**, North Platte. Contact Jessica.lachere@nebraska.gov
- ♥ April 15-16, 2011: **Rocky Mountain Early Childhood Conference**, Denver, CO. Contact info@ecconference.com
- ♥ April 29, 2011: **Infant Toddler Symposium, Omaha**. For more info, contact: OmahaAEYC.org
- ♥ May 16-17, 2011: **Early Development Network Annual Conf**, Kearney. Contact Jessica.lachere@nebraska.gov
- ♥ June 12-15, 2011: **NAEYC Professional Development Institute**, Providence, Rhode Island. Contact naeyc.org
- ♥ June 15, 2011: **Early Childhood Conference**, Seward. Contact Annette.oliver@cune.edu
- ♥ June 21-23, 2011: **ERS Training**, Lincoln. Contact Jessica.lachere@nebraska.gov
- ♥ July 13-14, 2011: **Kindergarten Conference**, Kearney. Contact marybethpistillo@nebraska.gov
- ♥ July 19-21, 2011: **ERS Training**, Omaha. Contact Jessica.lachere@nebraska.gov
- ♥ September 26-29, 2011: **ERS Training**, Kearney. Contact Jessica.lachere@nebraska.gov
- ♥ October 18-20, 2011: **ERS training**, Omaha. Contact Jessica.lachere@nebraska.gov
- ♥ November 2-5, 2011: **NAEYC Annual Conference**, Orlando, FLA. www.naeyc.org