

ST. JOHN'S CHILD DEVELOPMENT CENTER

20 Main Street
Seward, NE 68434
Program Coordinator: Rebecca Bimler
402-643-3122
Email: cdc@stjohnseward.org
Initial Site Visit: April 20 & 21, 2007
Approximate square footage: 4,600

DEMONSTRATION SITE OVERVIEW



Program Overview:

St. John Child Development Center opened on the Concordia College campus in August of 1992, with 39 children. It moved to its present location in June, 1997. The center now serves over 100 children, ages 18 months-6th grade in Seward and the surrounding counties. This program meets quality standards set by the National Lutheran School Accreditation and is accredited by the National Association for the Education of Young Children.

Ages served: Toddlers, Preschool, School Age

Number of children enrolled: 91-120

Serve children with Special Needs: Yes, Speech/Language, Behavior Disorder

Serve low income children: Yes

Number of staff: 14

From their Application:

We provide care and education for children 18 months through the 6th grade. We need an open ended outdoor classroom which meets a wide range of developmental needs and abilities. Incorporating a natural outdoor classroom would provide a good model for other programs who have the unique challenge of serving multiple-ages on a common playground.



St. John's Child Development Center



Drums and storage

St. John's
Child Care
Seward, NE
Spring, 09



Water Feature



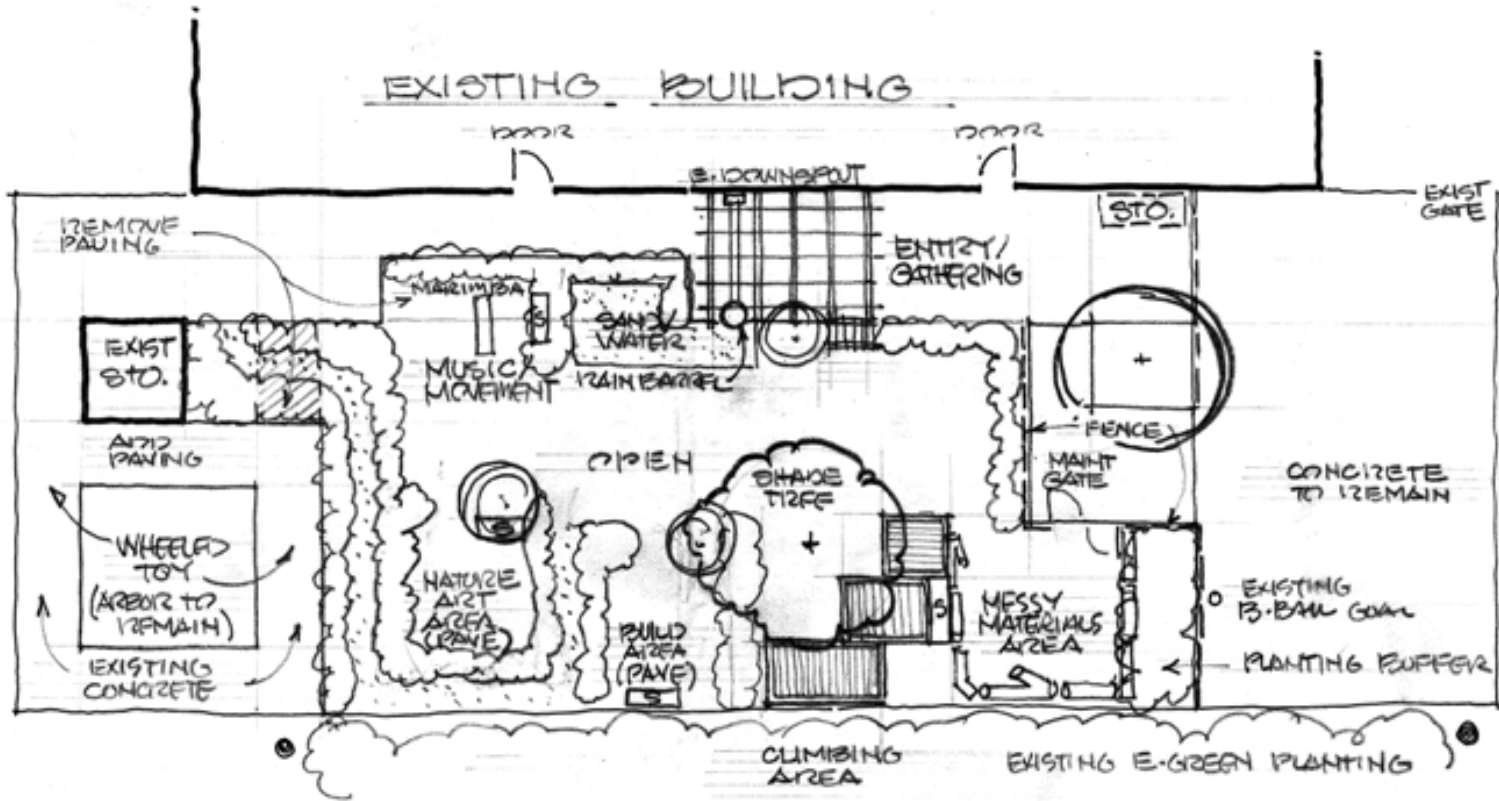
Plants



Watering Plants

St. John's Child Development Center

All Photos Provided By Individual Sites



ST JOHN'S SCHOOL
PROGRAM SKETCH

1" = 10'-0"