

## RUTH STAPLES CHILD DEVELOPMENT LABORATORY, UNL

University of Nebraska—Lincoln

Lincoln, NE 68583

Program Administrator: Michelle Rupiper, PhD

Phone: 402-472-1675

Initial site visit: February 19-20, 2007

Approximate square footage: 16,720

## PILOT SITE OVERVIEW



### Program Overview:

The Ruth Staples child Development laboratory is a high quality children's program where college students train to be teachers and scholars learn more about young children through research. The nationally accredited program offers full and half day childcare services for children 2 through 5 years. As a teacher training facility, university students take an active role in the classrooms by planning, implementing and evaluating activities with the children, under the supervision of the faculty.

Ages served: Toddlers, Preschoolers, School Age

Number of children served: 31-60

Serve children with Special Needs: Yes

Serve low income children: Yes

Number of staff: 5 paid staff + student teachers

### From their application:

Each year, more than 100 students complete field placements at the CDL. These students will go on to teach in early childhood and elementary school systems, Head Start programs, child care programs, etc. Many of these students will become employed as director or administrators of early childhood programs. This provides the CDL the unique opportunity to impact innumerable children.



INFORMATION DEVELOPED BY NEBRASKA AEYC  
[WWW.NebraskaAEYC.org](http://WWW.NebraskaAEYC.org)

Ruth Staples Child Development Laboratory, UNL

**RUTH STAPLES CHILD DEVELOPMENT LABORATORY SCHOOL  
UNIVERSITY OF NEBRASKA AT LINCOLN  
September, 2007**



Entrance



Greenhouse



Nature art Area

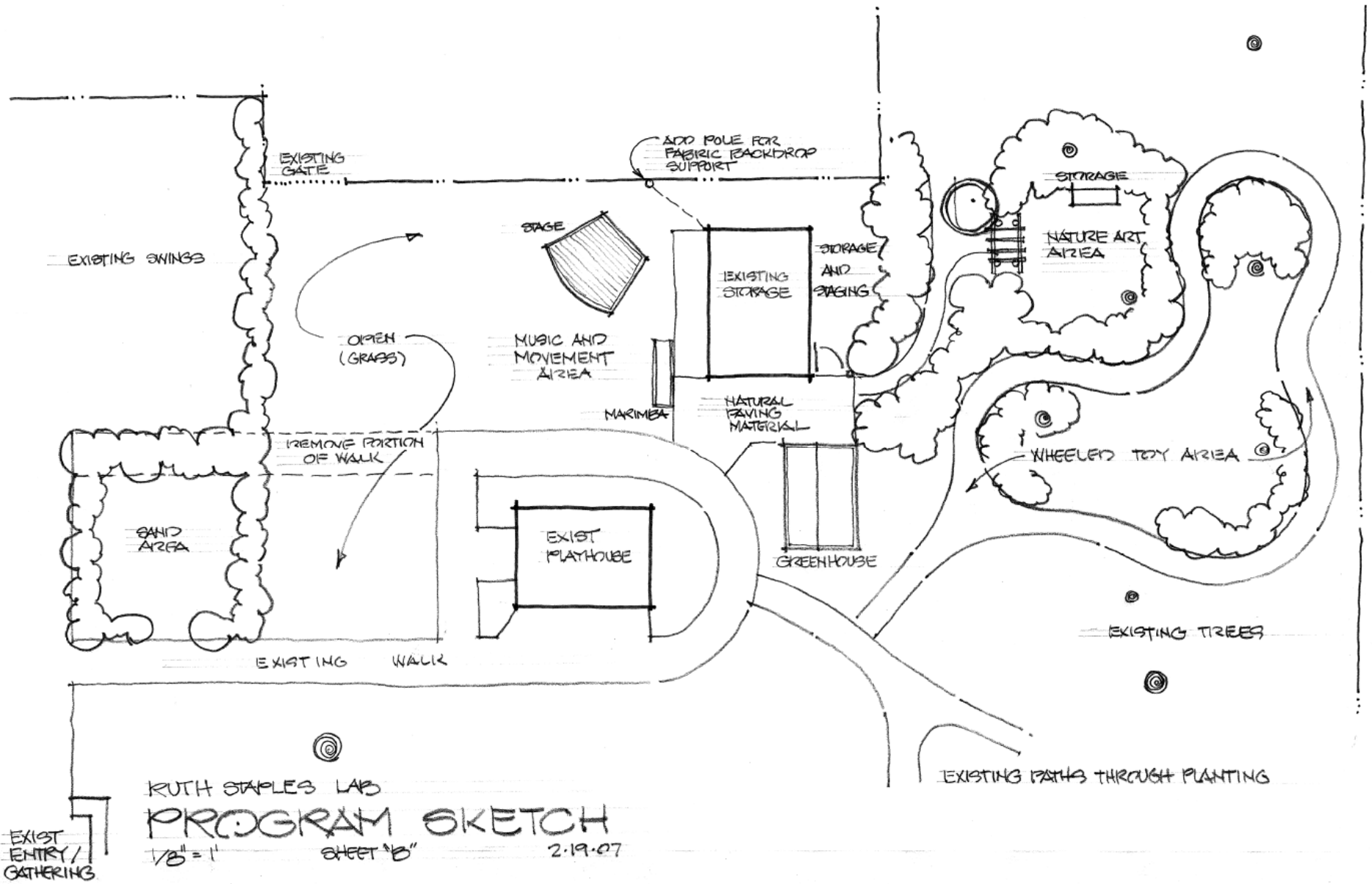
**ALL PHOTOS PROVIDED BY INDIVIDUAL SITES**



Plantings



**ALL PHOTOS PROVIDED BY INDIVIDUAL SITES**



## RUTH STAPLES CHILD DEVELOPMENT LAB