

NARED'S PEE WEE PALACE

3650 Crown Point Avenue

Omaha, NE 68111

Program Administrator: Deb Nared

Nature Program Coordinator: Sylvester Washington

Phone: 402-455-2442

Initial Site Visit: September 12, 2007

Approximate Square Footage: 5,040



Program Overview:

Nared's Pee Wee Palace is a privately owned, licensed child care facility, strategically located in the heart of a densely populated urban community with a diverse population and income levels. The Nared sisters, along with their mother Jacqueline, started Nared's Pee Wee Palace child care center in 1979 in a vacant church in north Omaha and the operation has remained a family business for nearly 30 years.

Ages served: Toddlers, Preschool, School Aged

Serve children with Special Needs: Yes,

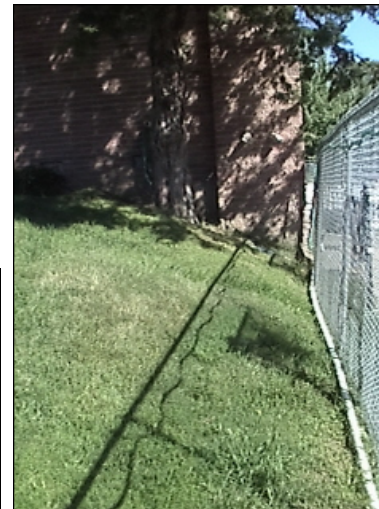
Number of staff: 12

Number of children enrolled: 59

Serve low income children: Yes, 95%

From their application:

Nared's Pee Wee Palace enjoys a rich history as a community leader, and has hosted a variety of city forums, workshops and conferences for local and state service organizations. They are also the founder and leader of the North Side Quality Childcare Association, an organization of 14 minority owned child care providers. They strongly believe in a team approach to teaching which puts the parents first. They enjoy a very successful rate of parent participation, including a large number of fathers.





Summer - 2010



[ALL PHOTOS PROVIDED BY INDIVIDUAL SITES](#)



INFORMATION DEVELOPED BY NEBRASKA AEYC
WWW.NebraskaAEYC.org

