

MOUNT VIEW ELEMENTARY

5322 North 52nd Street

Omaha, NE 68104

Program Administrator:

Phone:

Initial Site Visit: October 30, 2007



Program Overview:

Ages served: Preschool, School Aged

Serve children with Special Needs:

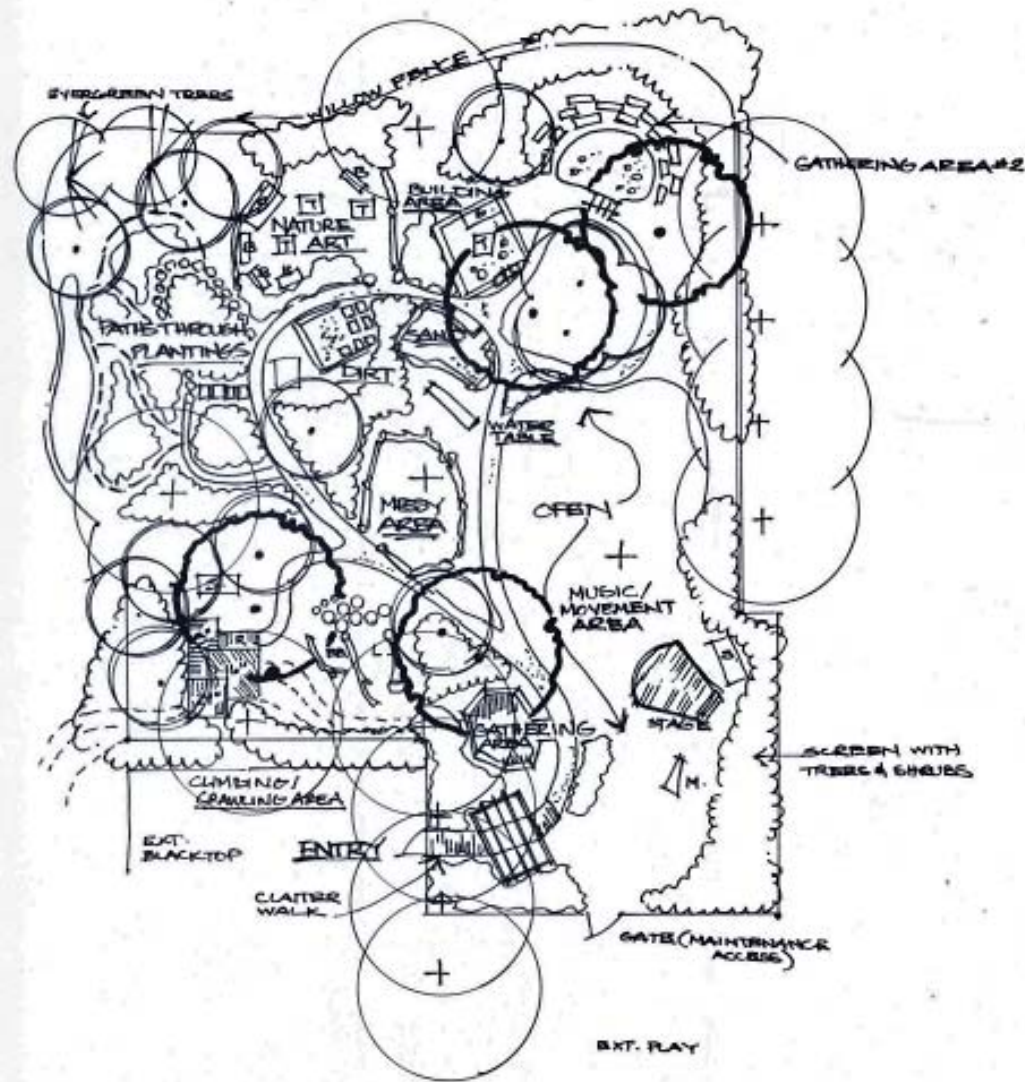
Number of staff: 14 (Pre-K—6th Grade)

Number of children enrolled: 208; 35 Pre-K, 35 K

Serve low income children: 68% on Free & Reduced lunch

Mount View Elementary, a part of the Omaha Public Schools, became an African Centered School at the beginning of the 2000-2001 school year. The multicultural curriculum is offered with an emphasis on African and African American Culture. The school includes 300 students in grades pre-kindergarten through 6th. 82.6% of the student population is African American, 6.3% is Latino, 11.8% is White. Mount View is a school-wide Title I School.





NATURE EXPLORE CLASSROOM
 CONCEPT PLAN
 MT. VIEW ELEMENTARY 10/07
 SCALE 1"=20'
 0 20
 N