

Montessori Children's House

10730 Pacific Street

Omaha, NE 68114

402-393-1311

Director: Dr. Lavonne Plambeck

Grades: 92 students, Pre-K and Kindergarten



INFORMATION DEVELOPED BY NEBRASKA AEOC
www.NebraskaAEOC.org

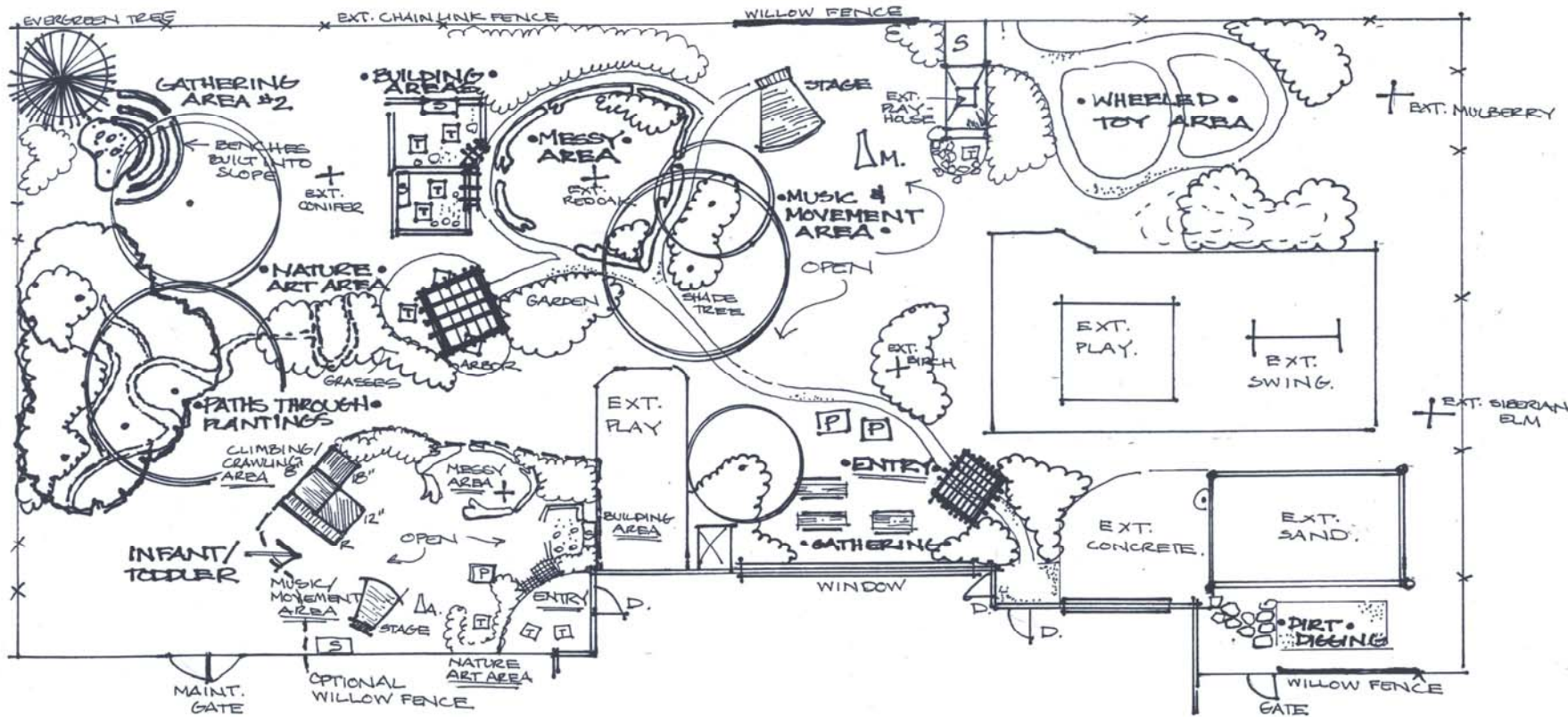


Summer - 2010

ALL PHOTOS PROVIDED BY INDIVIDUAL SITES

INFORMATION DEVELOPED BY NEBRASKA AEYC
www.NebraskaAEYC.org





**NATURE EXPLORE CLASSROOM
CONCEPT PLAN**

MONTESSORI CHILDREN'S HOUSE



INFORMATION DEVELOPED BY NEBRASKA AEYC
www.NebraskaAEYC.org