

McPHEE ELEMENTARY SCHOOL

820 South 15th Street

Lincoln, NE 68505

Program Administrator: Scott Nelson

402-436-1150 email: snelson@lps.org

Initial Site Visit: April 13, 2007

Approximate square footage: 36,800

DEMONSTRATION SITE OVERVIEW



Program Overview:

McPhee Elementary School, constructed in 1965, sits directly south of the state capitol, on the site of the old Capitol School. It is named after Clare McPhee, a long-term principal of the Capitol School. There are 237 students in grades PreK-5— 49% are students of color, 84% are eligible for free/reduced meals, and 51% attend on permit from other neighborhoods.

Ages served: Preschool, School Age

Number of children: 181+

Serve children with Special Needs: Yes

Serve low income children: Yes

Number of staff: 40

From the application:

McPhee Elementary School is a Title I School in an urban neighborhood. Most of the students live in apartment with small or non-existent yards. The PTA has been committed to creating a green space learning environment for over 10 years and has been able to fund Phase I of the project.



McPhee Elementary Schools

INFORMATION DEVELOPED BY NEBRASKA AEYC
www.NebraskaAEYC.org

**McPhee Elementary
Spring, 2009**



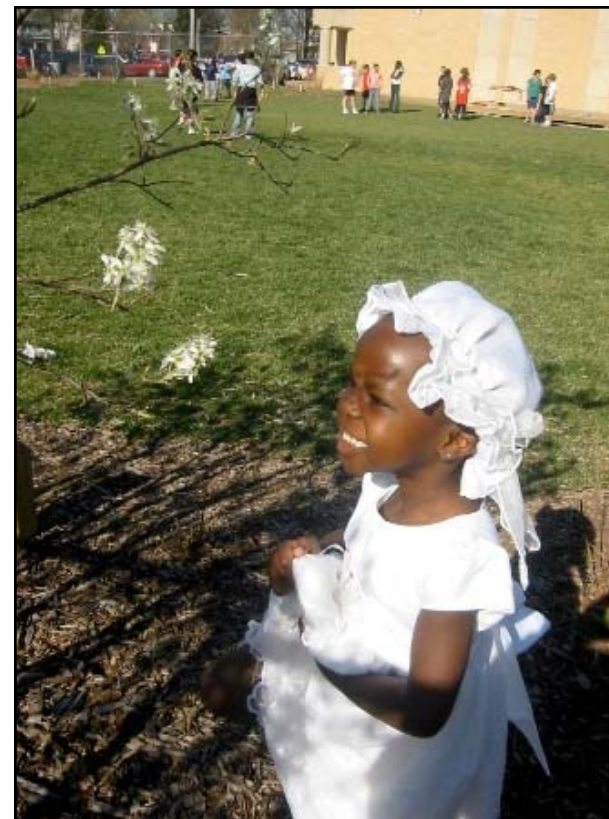
Photos provided by McPhee Elementary School
McPhee Elementary Schools



McPhee Elementary Spring, 2009

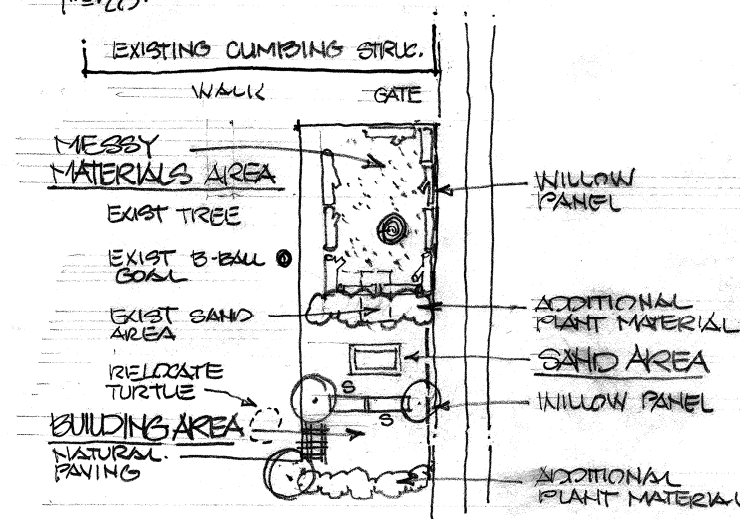
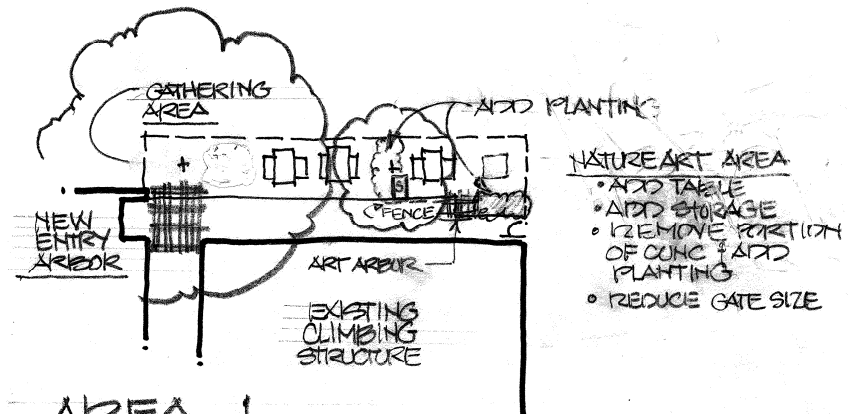
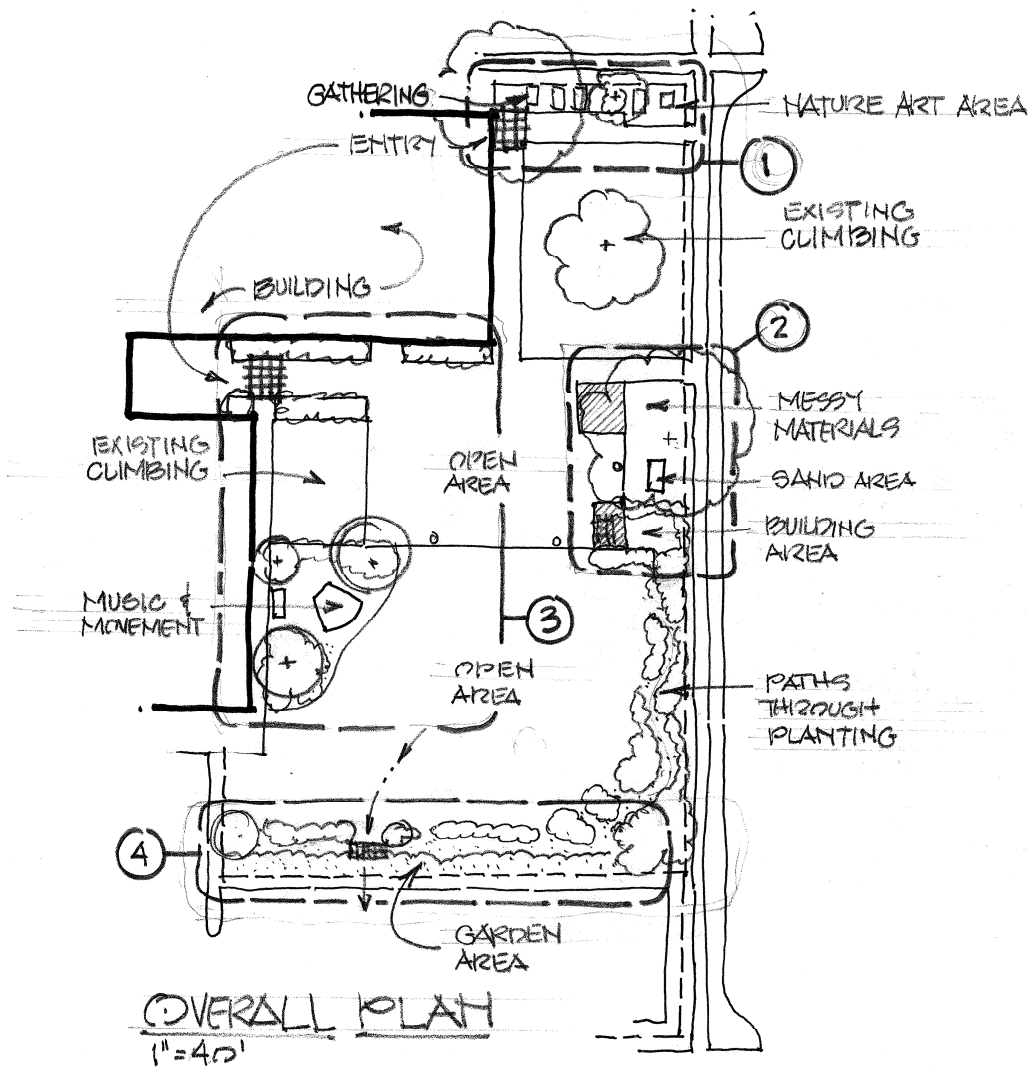


Science in action



McPhee Elementary Schools

Photos provided by McPhee Elementary School



McPHEE ELEMENTARY
PROGRAM SKETCH
SCALE AS NOTED 4.13.07

McPhee Elementary Schools

INFORMATION DEVELOPED BY NEBRASKA AEYC
www.NebraskaAEYC.org