

IMAGINATION STATION

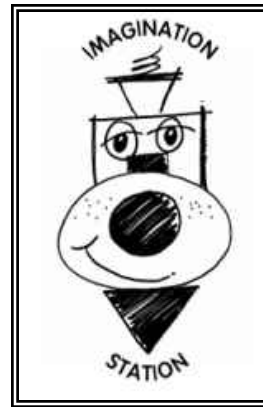
180th & Pacific

Omaha, NE 68130

Program Administrator: Donna McGuire

Phone: 402-778-1134

Initial Site Visit: October 17, 2007



“Eddie the Engine” is the company logo. To the parents, Eddie symbolizes everything wonderful about being a child:

- *He’s a train engine so he’s ALWAYS in motion,*
- *His eyes are always wide open, wanting to see what’s next,*
- *The smile he always wears is contagious. Just like a child’s.*

Program Overview:

Imagination Station is a locally owned and operated, fully licensed, accredited child care facility providing care for children from the ages of 6 weeks to 12 years. Their mission is to provide children with the highest quality of care. A special feature is Education Station, a popular preschool program following the High/Scope theory of Early Childhood Education.

Ages served: Infants: Toddlers, Preschool, School Aged

Serve children with Special Needs: Yes

Number of staff: 35

Number of children enrolled: 220

Serve low income children: No

From their application:

We as a teaching staff and program have been committed to creating an Outdoor Classroom. We presented have the support of the Parent Advisory board. We have a good working relationship with many of the businesses in our area who support us in many different ways throughout the year. We also have amazing families who are always willing to engage their places of business or themselves in our special projects.



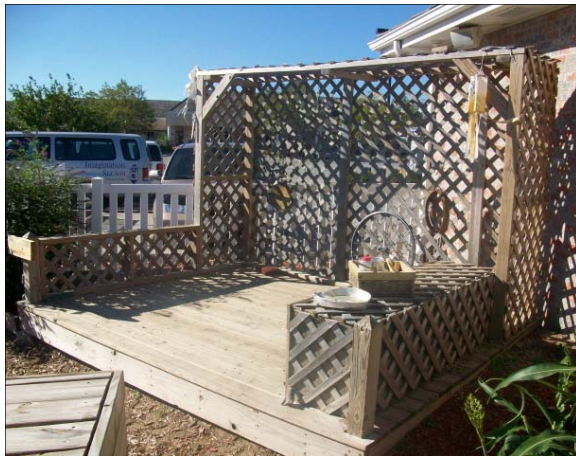


Photos provided by
Imagination Station



S
U
M
M
E
R

2
0
1
0



Photos provided by
Imagination Station

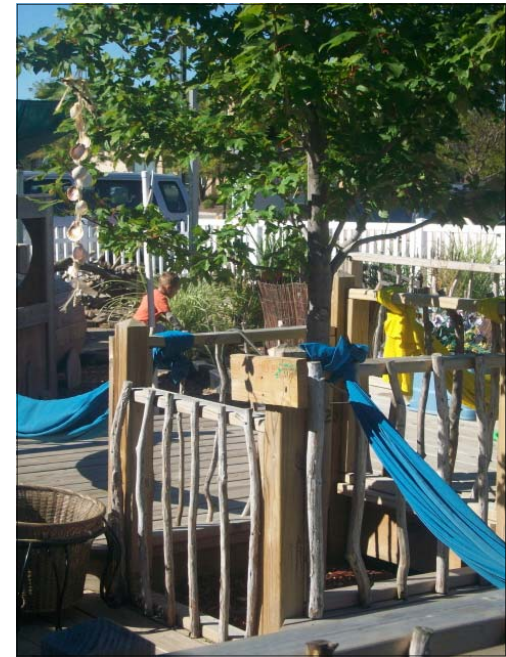


**INFORMATION DEVELOPED BY
NEBRASKA AEYC
WWW.NebraskaAEYC.org**





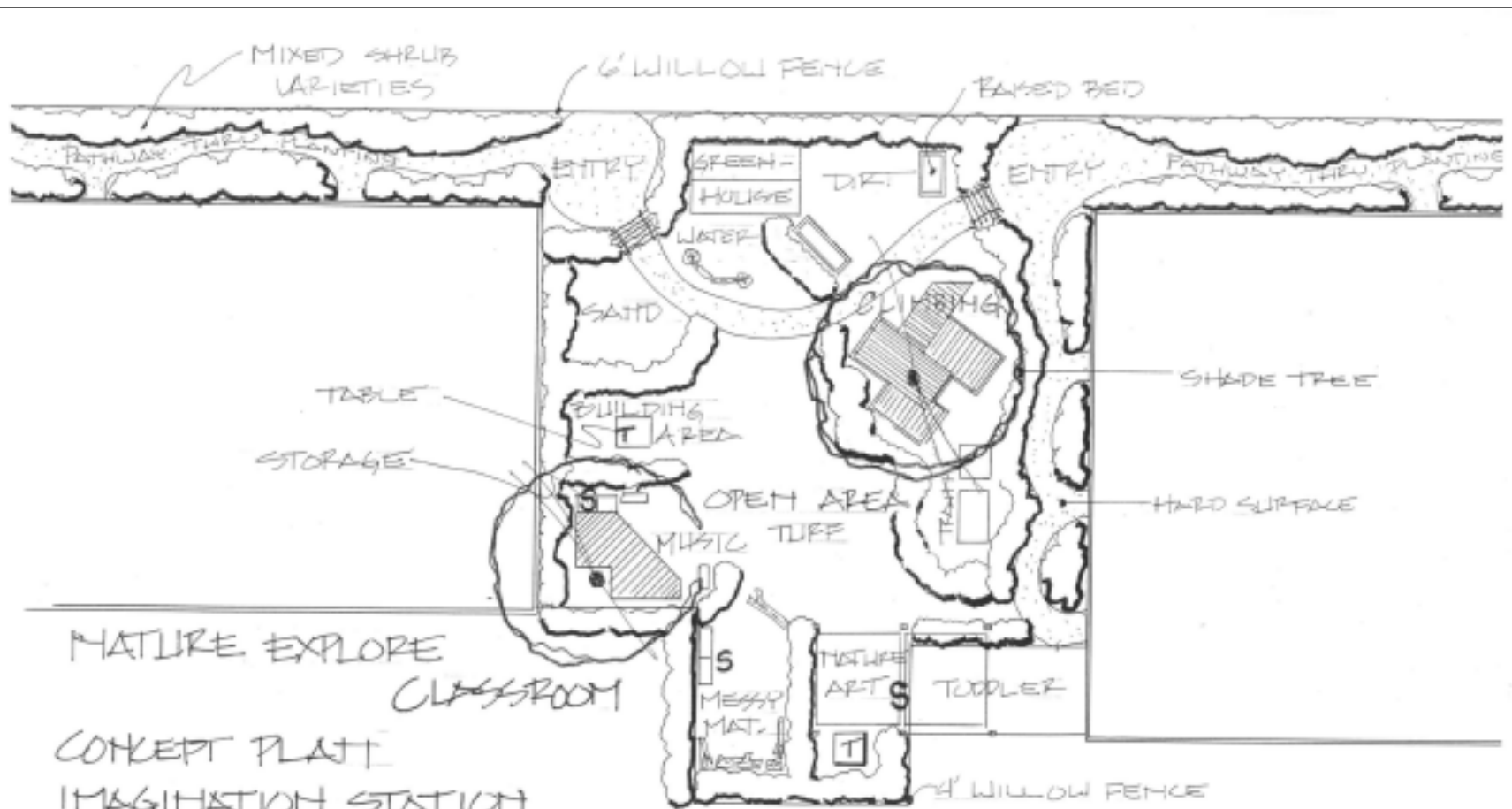
SUMMER - 2010



Photos provided by
Imagination Station

INFORMATION DEVELOPED BY NEBRASKA AEYC
WWW.NebraskaAEYC.org





NATURE EXPLORE
CLASSROOM

CONCEPT PLAN
IMAGINATION STATION
OMAHA, NE

1"=10'-0" 0 10' 20' 10-16-07

THE SCHEMMEZ ASSOCIATES BRIAN J. LEADERS