

## HAND IN HAND CHILD CARE

8030 Trendwood Drive

Lincoln, NE 68506

Program Administrator: Jane Kreifels

402-483-4013

Initial Site Visit: February 18-19, 2007

Approximate square footage: 2,496

## PILOT SITE OVERVIEW



### Program Overview:

Jane Kreifels is a family child care home provider in the suburbs of Lincoln. She serves infants, toddlers, preschoolers and school age children. She is licensed to serve 10 children.

Ages served: Infants, Toddlers, Preschoolers, School Age

Number of children: 0-30

Serve children with Special Needs: No

Serve low income children: No

Number of staff: 1

### From the application:

This project occurred as I was beginning my goal planning for 2007. One of the areas of my program that needs attention in the outdoor opportunities, but I was struggling with the direction I wanted to take.

My educational background is in Special Ed. I see so many opportunities outside for all children, but enhanced opportunities for the disabled. I have a very basic outdoor facility—the transition could be dramatic!



INFORMATION DEVELOPED BY NEBRASKA AEYC  
[www.NebraskaAEYC.org](http://www.NebraskaAEYC.org)

# Hand in Hand Family Child Care Home Provider, Summer, 2008





Messy Materials Area

**Hand in Hand**  
**Family Child Care Home**  
**Provider**  
**Summer, 2008**



Snowball Bush hide-away



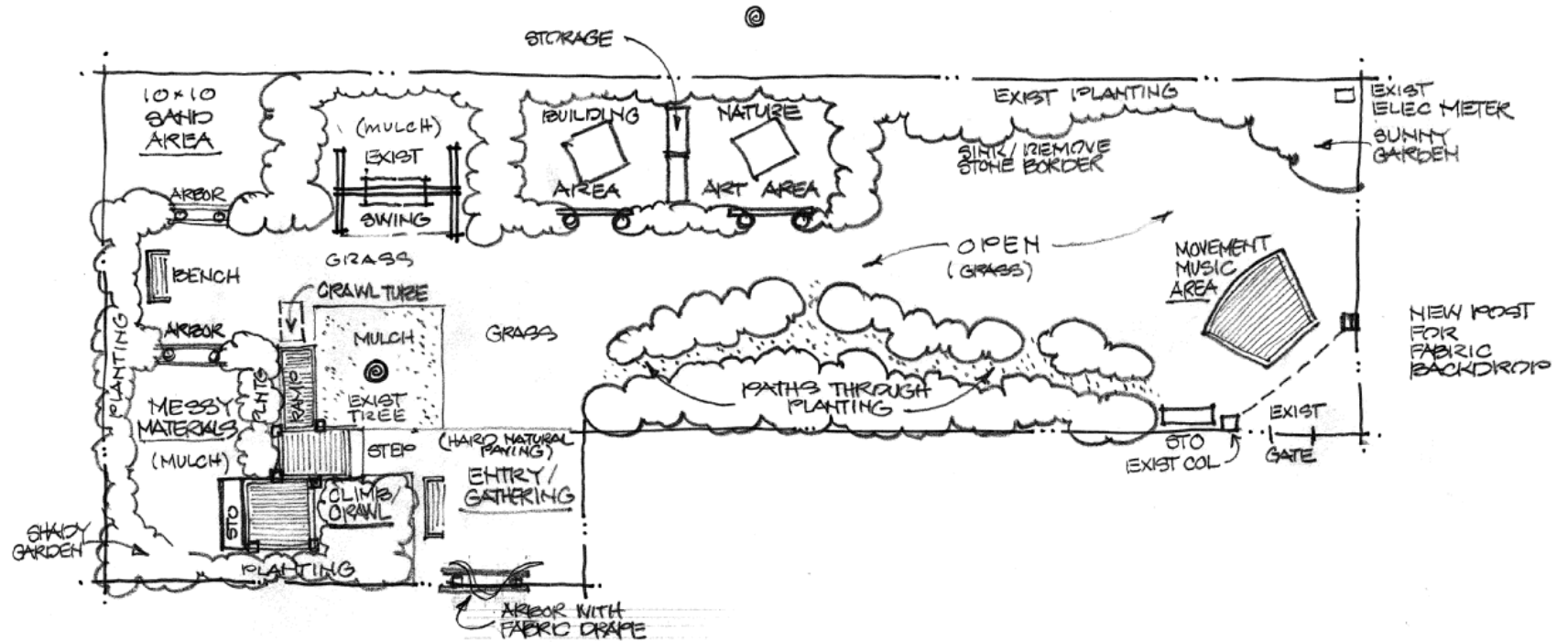
Butterfly Garden



Butterfly Garden



Butterfly Garden



JANE KREIFELS

# PROGRAM SKETCH

NOT FOR CONSTRUCTION

1/8" = 1'-0" 2.10.07

## HAND IN HAND CHILDCARE

INFORMATION DEVELOPED BY NEBRASKA AEYC

[www.NebraskaAEYC.org](http://www.NebraskaAEYC.org)