

HEAD START CHILD & FAMILY DEVELOPMENT PROGRAM—GRAND ISLAND PIPER

310 Piper
Grand Island, NE 68801
Program Coordinator: Gay DeMars
308-385-5058
Email: gdemars@hshn.org
Initial Site Visit: April 23 & 24
Approximate square footage: 8,500

DEMONSTRATION SITE OVERVIEW



Program Overview:

This site is a part of Child and Family Development Program. The Child & Family Development Program provides comprehensive pre-kindergarten services to children in a 6 county area, serving a total of 1,200 children in 17 centers.

Ages served: Preschool
Number of children enrolled: 91-120
Serve children with Special Needs: Yes
Serve low income children: 100%
Number of staff: 18

From their Application:

There is currently a fenced in play area that could be better designed to meet the developmental needs of the three and four year old children in this Head Start program. The program is licensed and accredited by the National Association for the Education of Young Children, Inc.



**INFORMATION DEVELOPED BY NEBRASKA AEYC
www.NebraskaAEYC.org**

Grand Island updates, Summer, 2009



Balance Beam



Balance Beam



Quiet Time

INFORMATION DEVELOPED BY NEBRASKA AEYC
www.NebraskaAEYC.org

Grand Island updates, Summer, 2009

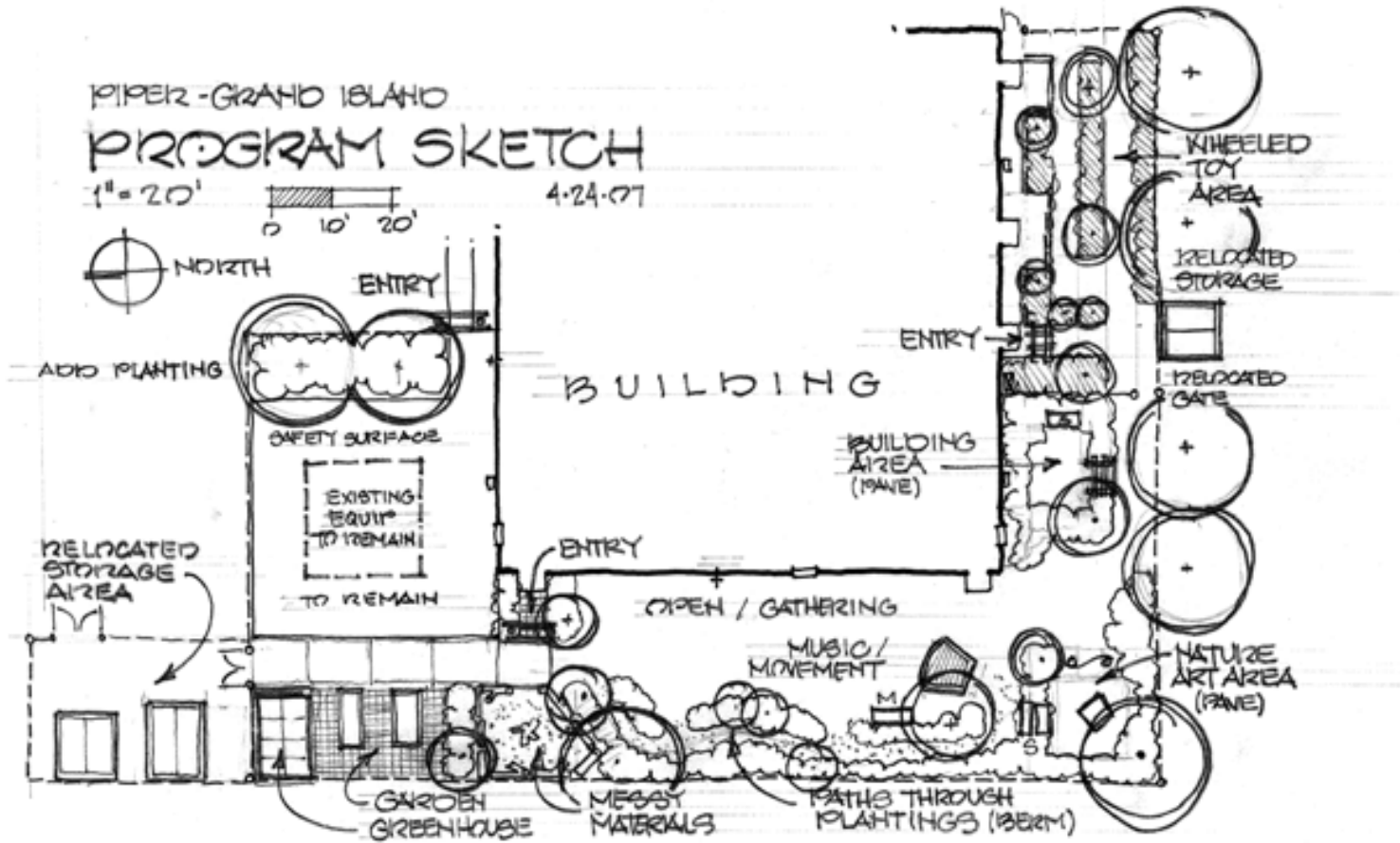


Photos provided by Grand island site

PIPER - GRAND ISLAND
PROGRAM SKETCH

1" = 20'
0 10' 20'

4.24.07



INFORMATION DEVELOPED BY NEBRASKA AEYC
www.NebraskaAEYC.org