

DEMONSTRATION SITE OVERVIEW

WEBSTER COUNTY EARLY LEARNING CENTER

606 Sycamore, PO Box 217

Blue Hill, NE 68930

Program Coordinator: Sally Hansen 402-462-4187

Email: Shansen@esu9.org

Classroom Teacher: Paula Southworth

Initial Site Visit: March 19-20, 2007

Approximate square footage: 7,125



Program Overview:

This facility is located in a small town of 867 and provides services to the students from the surrounding areas. There are currently 386 students in grades K-12. Through community support, a new elementary building was constructed in 2002. The Early Learning Center is one of 38 Early Childhood Education Grant Programs in Nebraska. Number of Staff: 4

Ages served: Preschoolers, School Age - # of children enrolled: 0-30 - Serve children with Special Needs: Yes - Serve low income children: Yes

From their Application:

The program is based on the High/Scope Early Childhood Philosophy and Piaget's teachings about how children learn best. The nature classroom would be a true fit with our program. We presently value our time to be outside and set aside a large block each day for outside play. We already benefit from strong family and community support.

Update Summer-2010: The Webster County Early Learning Center @Blue Hill is one of the Nebraska Early Childhood Education Grant Programs. In partnership with Blue Hill Public Schools, Head Start and Educational Service Unit #9 the program is available to all three and four-year olds in the community. The program is located at the Blue Hill Elementary School, making the Nature Explore Classroom available to elementary students.

In the Outdoor Classroom children are encouraged to explore and interact with nature as they participate in activities at each of the work areas. Natural elements are incorporated to engage all of the children's senses including: a butterfly garden, strawberry patch, and sensory herb garden.

Local volunteers and civic clubs such as the Boy Scouts and Future Farmers of America (FFA), have been instrumental in the development of the classroom. The Webster County Early Learning Center @Blue Hill will apply for the Nature Explore Classroom Certification this fall.





Fence

**SUMMER, 2007
Webster Co
Early Learning
Center
Blue Hill**



Start of Climber



**INFORMATION DEVELOPED BY NEBRASKA AEYC
WWW.NebraskaAEYC.org**



Donated Trees



Hydrant & Fence



Trenching

Blue Hill
May, 2008

INFORMATION DEVELOPED BY NEBRASKA
AEYC
WWW.NebraskaAEYC.org



**BLUE HILL
SUMMER, 2008
Work Day**

**INFORMATION DEVELOPED BY NEBRASKA AEYC
WWW.NebraskaAEYC.org**



Boy Scout Troop making
& posting signs



Photos provided by Blue Hill Outdoor Classroom





**BLUE HILL
SEPTEMBER, 2008**



**INFORMATION DEVELOPED BY NEBRASKA AEYC
WWW.NebraskaAEYC.org**





Blue Hill Summer, 2010

Photos provided by Blue Hill
Outdoor Classroom



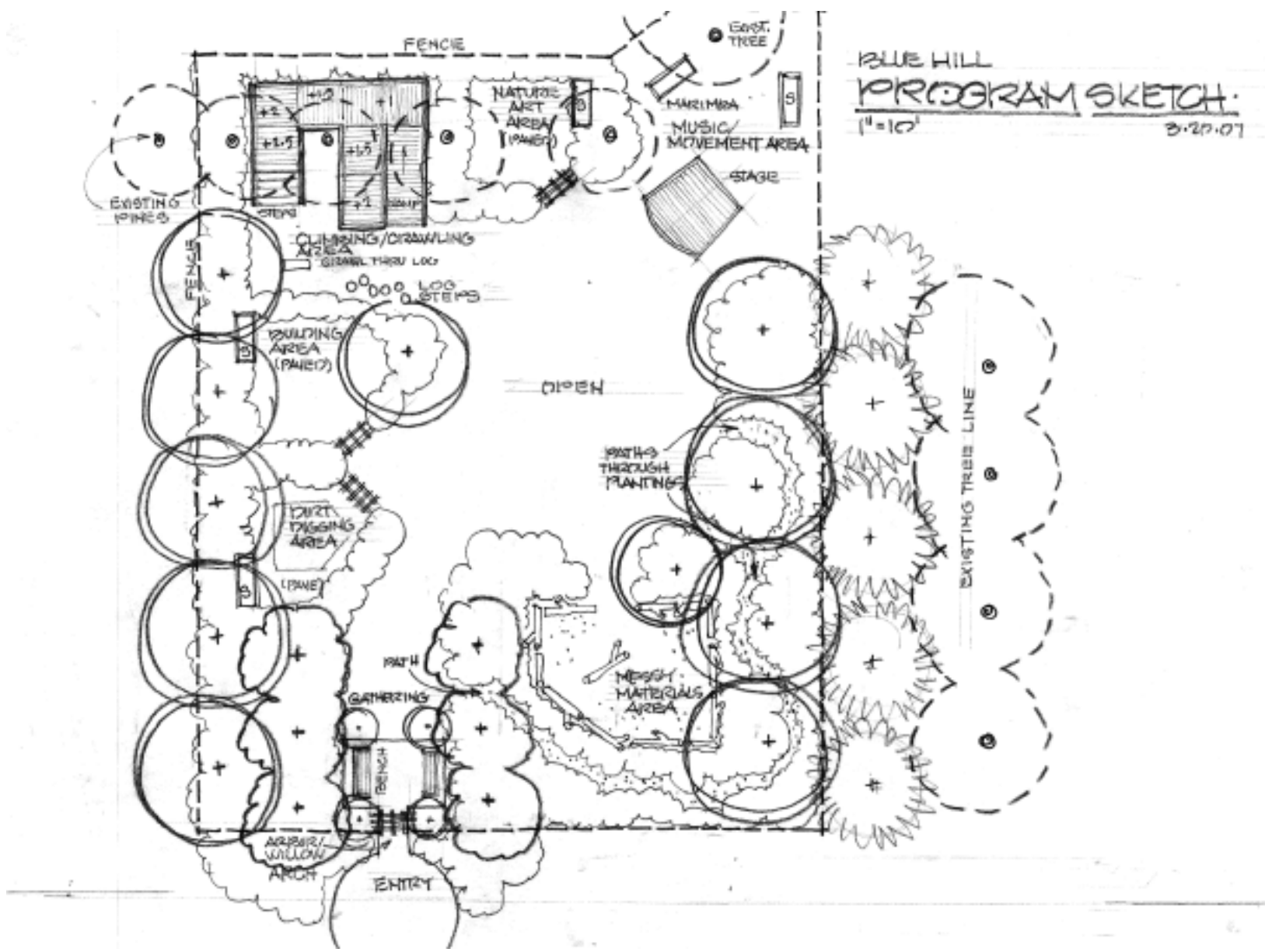


**Blue Hill
Summer, 2010**

Photos provided by Blue Hill Outdoor Classroom



**INFORMATION DEVELOPED BY NEBRASKA AEYC
WWW.NebraskaAEYC.org**



BLUE HILL
PROGRAM SKETCH:
 1" = 10'
 3.20.07